

PI 200



WIŚNIOWSKI

GATES | WINDOWS | DOORS | FENCES

INDUSTRIAL SLIDING GATE PI 200

Intended use: PI 200 gates are perfect for all types of business activity. These gates are installed around industrial buildings, airports, ports, guarded car parks, as well as schools, kindergartens, shopping malls, etc. Sliding gates are also used on wide plots where the gate can slide along the fencing. The gates are also frequently used when the forecourt is short or if a hill prevents the use of double-leaf gates.



SAFE

Manually-operated and power-operated PI 200 gates were awarded the CE mark, which confirms their compliance with the provisions of the PN-EN 13241-1 standard for industrial and residential gates.



CANTILEVER DESIGN

The PI 200 gate features a cantilever design. The leaf is seated on a 200x155mm track beam and moves on carriages mounted to the concrete foundation. The gate moves about 120mm above ground level and does not contact the floor.



CORROSION RESISTANT

PI 200 cantilever gates are secured against corrosion by hot-dip galvanizing or hot-dip galvanizing and coating with polyester paint. Duplex products are covered by our 5-year corrosion protection guarantee.



SYSTEM-BASED SOLUTION

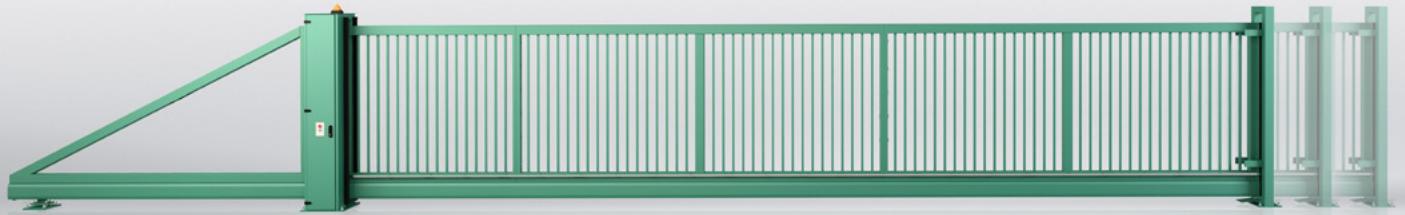
PI 200 cantilever gates form a system of elements for access control. When used together with industrial segments, mesh panels (Vega B, Vega B Light, Vega 2D Super and Vega 2D), posts, and double-leaf gates and wickets (Bastion, Modest, Gardia), they form a complete fencing system.



TAILORED TO INDIVIDUAL NEEDS

A BROAD RANGE OF DIMENSIONS:

- width range 8,000-12,000mm.
- height range 1,200-2,400mm.



| Leaf height (H) in [mm] up to | Width between posts (So) in [mm] up to | | | | | | |
|-------------------------------|--|------|------|------|-------|-------|-------|
| | 8000 | 8500 | 9000 | 9500 | 10000 | 11000 | 12000 |
| 1200 | + | + | + | + | + | | |
| 1450 | + | + | + | + | + | + | + |
| 1650 | + | + | + | + | + | + | + |
| 1950 | + | + | + | + | + | + | + |
| 2150 | + | + | + | + | + | + | + |
| 2400 | + | + | + | + | + | | |

INTENDED USE

PI 200 gates are perfect for all types of private and industrial business activity. These gates are installed around industrial buildings, airports, ports, guarded car parks, around schools, kindergartens, shopping malls, etc. Sliding gates are also used on wide plots where the gate can slide along the fencing. The gates are also frequently used when the forecourt is short or if a hill prevents the use of double-leaf gates.

Characteristics

- 200 x 155mm track beam,
- triple guiding frame for manually-operated gates,
- double lock post with a catcher,
- back frame for balancing the leaf when open,
- power-operated gate with a drive integrated with the post,
- also available with an external drive.

RELIABLE CANTILEVER DESIGN

TRACK BEAM

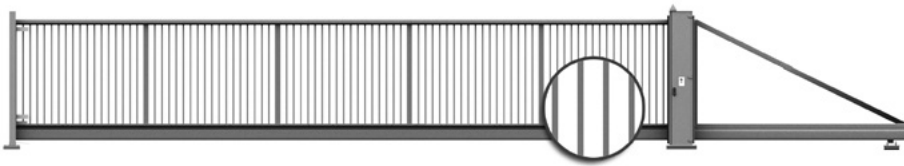
The PI 200 gate features a cantilever design. The leaf is seated on a 200x155mm track beam and moves on carriages mounted to foundation anchors. The PI 200 cantilever sliding gate is designed for closing entrances with a clear opening width up to 12m, and if two gates installed opposite to one another are used (2 x 12m), an opening width up to 24m is possible,

We also offer PI 200 cantilever gates with the width of 16m, available on request.

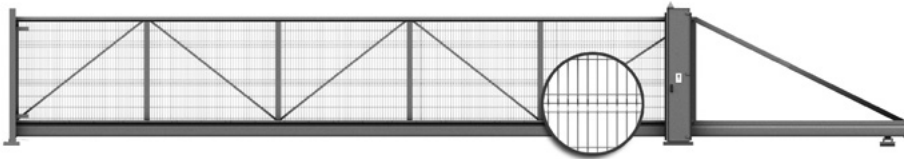




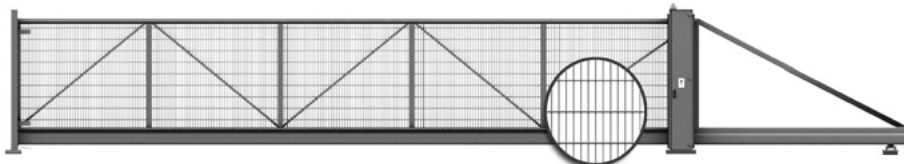
EXAMPLE INFILLS AVAILABLE FOR CANTILEVER SLIDING GATES



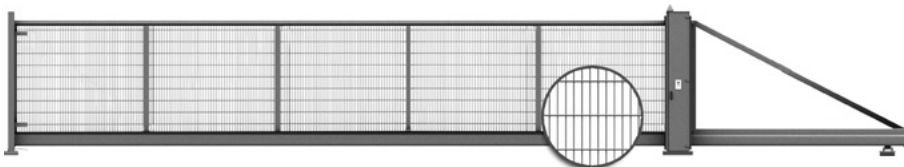
Sliding gate with an infill made of 25 x 25 [mm] box sections welded to the structure – view from the premises.



Sliding gate with an infill made of VEGA B mesh panels screwed to the structure – view from the premises.



Sliding gate with an infill made of VEGA 2D Super mesh panels screwed to the structure – view from the premises.



Sliding gate with an infill made of VEGA 2D Super mesh panels welded to the structure – view from the premises.

NEW

NEW SYSTEM INFILLS



Round tube section infill \varnothing 25 [mm] welded to the structure.

Also available as an extended infill.



Closed box section infill 25x25 [mm], CARO arrangement, welded to the structure.

Also available as an extended infill.



Closed box section infill 30x18 [mm], welded to the structure.

Also available as an extended infill.

MODULAR DESIGN

The sliding gates are made of modules connected together with screws using fasteners designed and patented by WIŚNIOWSKI. In gates over 5,900mm wide, the leaf is made of modules. 100x50mm sections are used for connecting the leaf modules, 120x50mm sections are used with widths above 10,000 [mm]. The assembly is screwed down to the track beam

COLOURS

COLOUR RANGE

Standard gates are available in the raw hot-dip galvanized version or hot-dip galvanized plus polyester coating version.

Industrial gates are also available in other RAL colours.

| | | |
|----------|----------|----------|
| RAL 5010 | RAL 6005 | RAL 7016 |
| RAL 7030 | RAL 9016 | RAL 7040 |



RAL palette colours



SLIDING GATE TYPES

MANUALLY-OPERATED GATE

GATE WITH A DRIVE IN THE LOW BOX

GATE WITH A DRIVE IN THE HIGH BOX



ACCESSORIES

COMFORT AND SAFETY

The PI 200 gates are available in the manually-operated and power-operated versions. The manually-operated version is fitted with a Locinox lock. The automatic gate is not fitted with a lock, as the operating unit doubles up as a lock. The automatic gate is especially recommended for premises where the gate has to be frequently opened and closed. In this case, the automatic drive unit is a very convenient solution. Depending on the required level of safety, the automatic gate is available in the Totmann (operated with a key switch) or the Automatik (operated with a remote control transmitter) version. Depending on the requirements, the automatic version is fitted with 3 safety edges (Automatik 1) or 5 safety edges (Automatik 2). The CE mark confirms safe operation of the PI 200 gates in all conditions.

| | THE TOTMANN VERSION | THE AUTOMATIK VERSION |
|---|--|-----------------------|
| STANDARD ACCESSORIES | | |
| ACTUATOR | ☑ | ☑ |
| CENTRAL CONTROL UNIT | ☑ | ☑ |
| RADIO RECEIVER | - | ☑ |
| TRANSMITTERS FOR CONTROLLING THE DRIVE REMOTELY - 2 PCS. | - | ☑ |
| WARNING LAMP | ☑ | ☑ |
| EXTERNAL ANTENNA | - | ☑ |
| PHOTOCELLS - 1 SET | - | ☑ |
| KEY SWITCH WITH AN EMERGENCY STOP SWITCH | ☑ | ☑ |
| SAFETY EDGES (AUTOMATIK 1 - 3 SAFETY EDGES; AUTOMATIK 2 - 5 SAFETY EDGES) | - | ☑ |
| SIGNAL TRANSMISSION SYSTEM FOR TRANSMITTING THE SIGNAL FROM THE SAFETY EDGE INSTALLED ON THE LEAF | - | ☑ |
| DIRECTIVES AND STANDARDS | THE PI 200 GATES CARRY THE CE MARKING IN ACCORDANCE WITH THE 2006/95/EC AND 2004/108/EC DIRECTIVES ON BUILDING PRODUCTS AND COMPLY WITH THE REQUIREMENTS OF THE EN 13241-1 STANDARD. | |
| *) ADDITIONAL MODULES HAVE TO BE USED. | ☑ STANDARD ACCESSORIES. ● OPTIONAL ACCESSORY. - NOT AVAILABLE. | |

STRUCTURAL POST

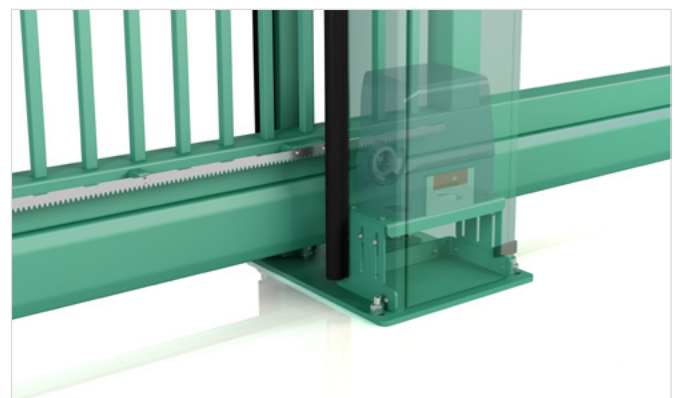
Structural (load-bearing) post made of 120x120 mm sections. The structural post of automatic gates is fitted with a shelf for installing the drive or is connected with one of the two available drive boxes. Low and high drive boxes are available, depending on the intended use of the gate and depending on the automatic operating unit.

DRIVE IN THE BOX

The box protects the drive and the control unit against changing weather conditions. The box lock secures the drive unit against unauthorized access. Each drive offered features an uncoupling function that can be used when power is out.

OPTIONAL ACCESSORIES

Optional accessories can be used. Photocells, reflective photocell, wired code keypad, two- or four-channel remote control transmitter, rotating warning light, main switch, induction loop detector, AW external radio receiver, external code keypad, proximity reader, proximity card / fob, LOCINOX key locker.





WIDTH RANGES FOR DRIVES

AVAILABILITY IS MARKED IN GREY | Availability is marked in grey

| Gate type | Drive unit model | 4,000 | 5,000 | 6,000 | 7,000 | 8,000 | 9,000 | 10,000 | 11,000 | 12,000 | 13,000 | 14,000 | 15,000 | 16,000 |
|-----------|--|-------|-------|-------|-------|-------|-------|--------|--------|--------|--------|--------|--------|--------|
| PI 200 | BENINCA BISON35 OTI ^{(1) (3)} | | | | | | | | | | | | | |
| | CAME BK 2200T ⁽¹⁾ | | | | | | | | | | | | | |
| | FAAC 850 + EP 104-1 | | | | | | | | | | | | | |
| | BFT ICARO NF PROX ⁽¹⁾ | | | | | | | | | | | | | |

DRIVE UNIT SPECIFICATION

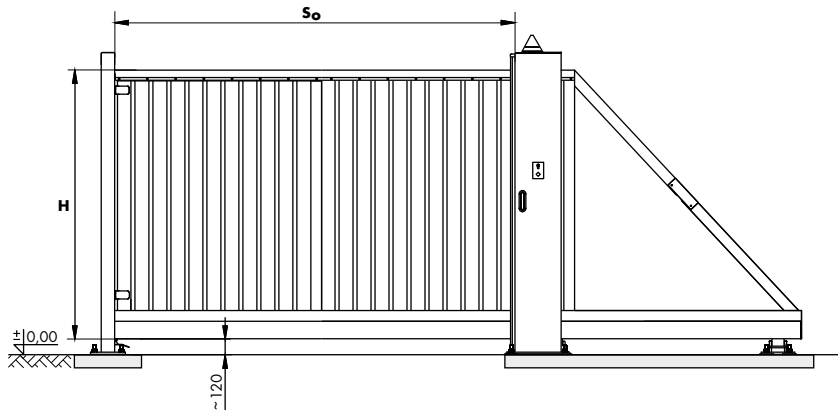
| GATE TYPE | DRIVE UNIT MODEL | MAX. NUMBER OF AC-TUATIONS PER HOUR | MOTOR SUPPLY | MAINS | POWER CONSUMPTION | TRAVEL SPEED |
|-----------|---------------------|-------------------------------------|--------------|-------------|-------------------|-------------------|
| PI 200 | BENINCA BISON35 OTI | heavy duty operation | 3 X 400V AC | 3 X 400V AC | 1,200 W | reg. 7-19 m/min. |
| | FAAC 850 + EP 104-1 | heavy duty operation | 3 X 400V AC | 1 X 400V AC | 1,800 W | reg. 20-30 m/min. |
| | BFT ICARO NF PROX | heavy duty operation | 230V AC | 230V AC | 750 W | 9 m/min. |
| | CAME BK 2200T | 40 | 3 X 400V AC | 3 X 400V AC | 600 W | 10.5 m/min. |

ORDERED AND DESIGN DIMENSIONS AND INSTALLATION DIMENSIONS

SLIDING GATE MOUNTING DIMENSIONS

The right gate, view from the premises (the ordered direction of the gate is the direction towards which the gate opens as seen from the premises).

Ordering dimensions



S₀ - width between posts - ordering dimension,
H - gate leaf height - ordering dimension.

| Track beam dimensions [mm] | Ordering width of the gate (S ₀) [mm] up to | Clear passage width S _j [mm]. Manually-operated gate or Totmann | Clear passage width S _j [mm]. Automatik gate version | Bottom clearance of the gate [mm] | Gate structure | Double lock post | Total length of the gate [mm] |
|----------------------------|---|--|--|-----------------------------------|---|------------------|-------------------------------|
| 200x155 | 8,000 | S _j =S ₀ -315 (+-10)mm | S _j =S ₀ -335 (+-10)mm S _j =S ₀ -365 (+-10)mm * | 120 | 100x100 up to the width of 10,000 and 120x120 over 10,000 | 120x120 | 11,100 |
| | 8,500 | | | | | | 11,600 |
| | 9,000 | | | | | | 12,300 |
| | 9,500 | | | | | | 10,200 |
| | 1,000 | | | | | | 13,500 |
| | 11,000 | | | | | | 15,000 |
| | 12,000 | | | | | | 16,500 |

*Applies to the FAAC 850 high-speed drive with the EP 104-1 control unit.



GALLERY



PI 200 INDUSTRIAL SLIDING GATE
 • Infill: 25x25mm box section
 • Anti-corrosion protection: hot-dip galvanization
 • Colour: RAL 9016



PI 200 INDUSTRIAL SLIDING GATE
 • Infill: 25x25mm box section
 • Anti-corrosion protection: hot-dip galvanization
 • Colour: RAL 7016

BUILD AN EXTENSIVE INDUSTRIAL FENCING SYSTEM

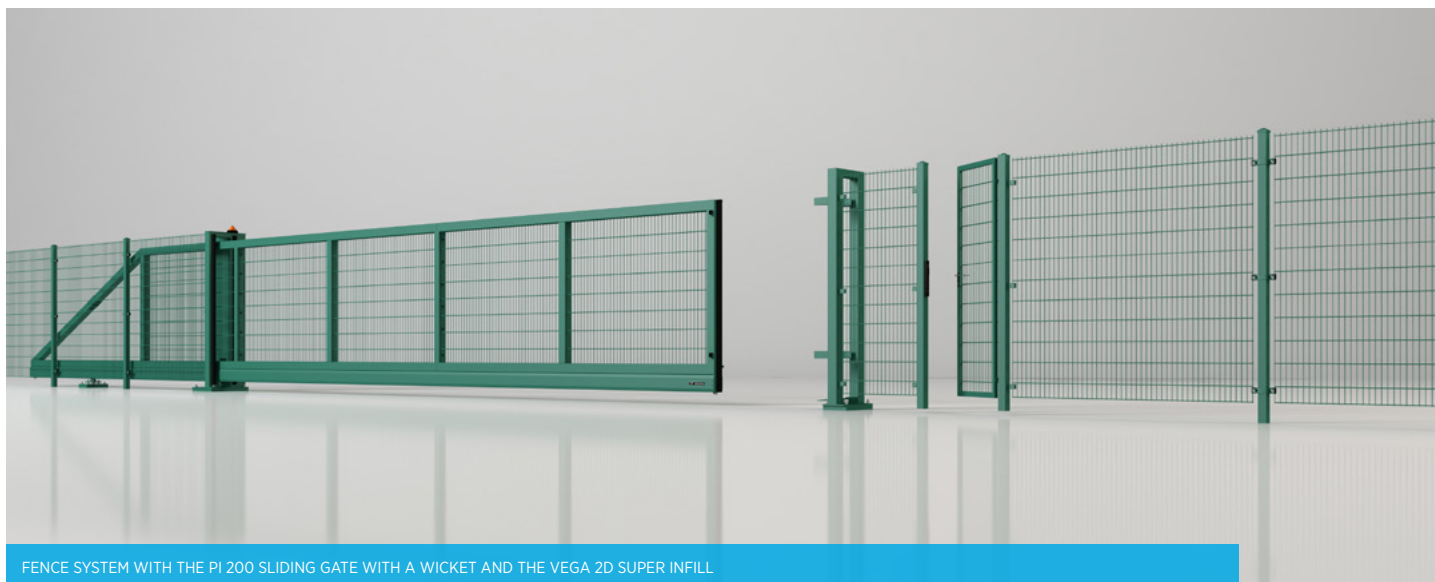


The WIŚNIEWSKI fences are a system of solutions ensuring comprehensive protection for your property. Our residential and industrial product range includes modern steel, profile, and panel fences. Reliable, high quality, and durable, our fences also boast an elegant and stylish look. WIŚNIEWSKI's comprehensive offer makes closing off your property simple and reflects great care for safety, security, and appearance.

TAKE ADVANTAGE OF OUR COMPLETE RANGE AND BUILD YOUR OWN FENCE.



FENCE SYSTEM WITH THE PI 200 SLIDING GATE WITH A WICKET AND A 25 x 25 [mm] BOX SECTION INFILL



FENCE SYSTEM WITH THE PI 200 SLIDING GATE WITH A WICKET AND THE VEGA 2D SUPER INFILL

