



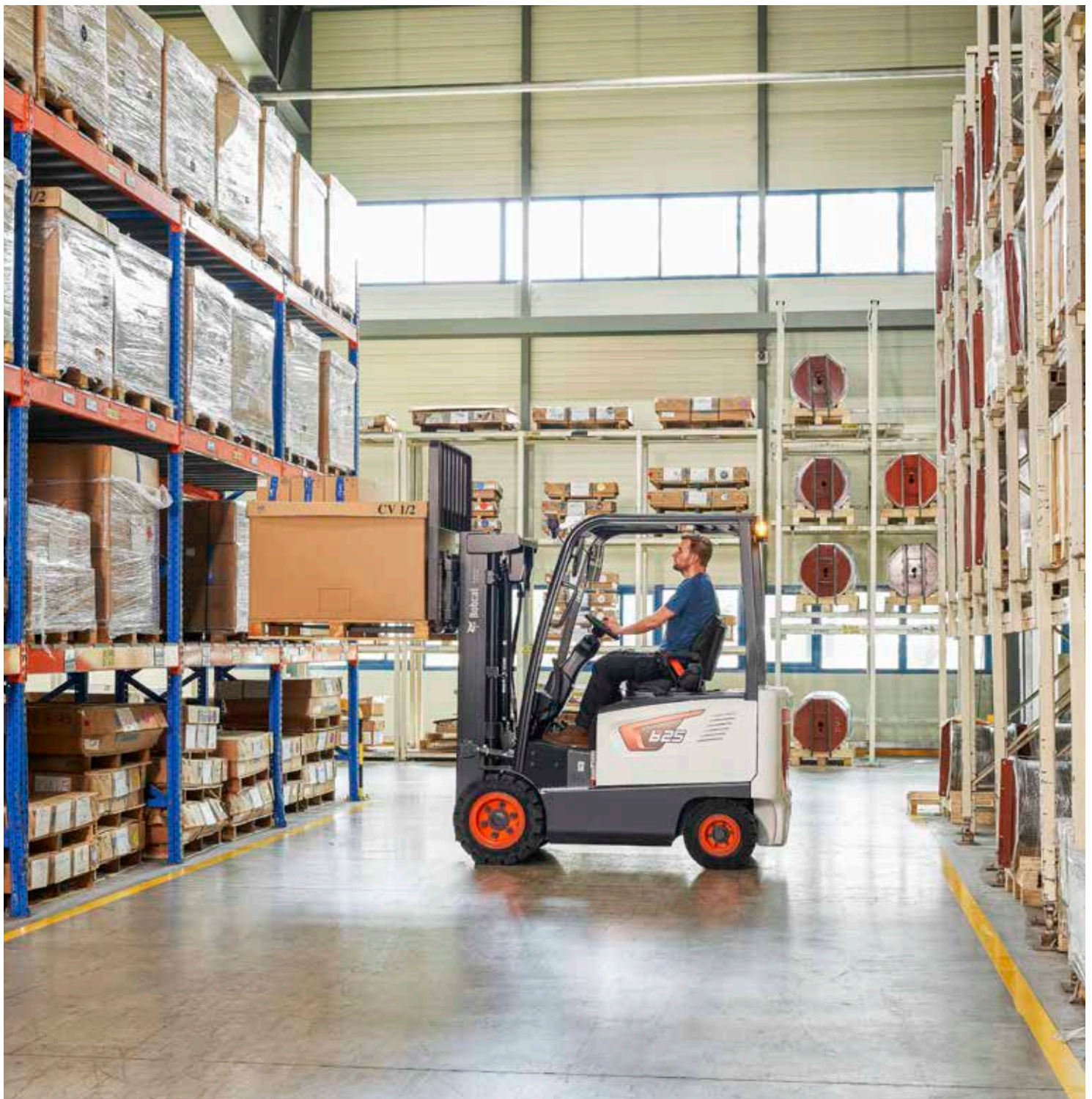
Bobcat®

One Tough Animal.

ELECTRIC FORKLIFTS

7-Series 1.8 to 3.5 ton capacity

🌐 MEA, CIS



INTRODUCTION

ONE TOUGH ANIMAL



BOBCAT'S HISTORY

In 1958, Melroe Manufacturing Company introduced a compact front-end loader that evolved quickly into the M400, the world's first true skid steer loader. The company soon adopted what became the world-famous 'Bobcat' brand – and its success paved the way for the global compact equipment industry we know today.

YEARS OF EXPERIENCE

In 2021, Bobcat expanded its portfolio by acquiring Doosan Industrial Vehicle. This specialist in material handling equipment constructed its first forklift in 1968 and went on to establish a global presence with 400 dealers in 93 countries.



BOBCAT TODAY

Bobcat is expanding its portfolio with the addition of forklifts and reach trucks for the material handling industry, offering a comprehensive lineup that will meet all your intralogistics needs. Bobcat forklifts and reach trucks are produced in our factory in South Korea, while our premium quality warehouse equipment is made in Germany.



OUR MISSION

We empower operators to accomplish more while working in the toughest conditions and tightest situations. When our customers have the will, we provide the way.

TOUGH, AGILE & SAFE

► BUILT FOR THE EXTREMES

Keep your operation running smoothly with the rugged and reliable B25S-7 electric forklifts, designed to deliver all-day performance. Dependability has been increased thanks to features like oil-cooled disc brakes and a durable transaxle. While safeguards such as IP65-rated controllers, sealed contractors, and motors ensure long-lasting protection for your investment.

For further enhancements, consider upgrading your drive and pump motor to an IP54 rating, or opt for the specialized hydraulic oil, enabling you to use the forklift for short durations in cold temperatures (down to -20°C).



Reduced noise at ear level to protect the operator's hearing

Excellent visibility through the mast for safer and more efficient operations
P. 7

A durable frame and mast for safer operation when carrying loads

Make the operator compartment your own by choosing your preferred directional change option: switch or lever



Improved upward visibility through the roof while lifting

Premium adjustable seat and steering column for maximum comfort during long shifts
P. 11

Improved cooling performance to reduce the risk of overheating, resulting in less downtime and increased productivity

Reduced steering radius for more maneuverability
P. 7

IP54-rated drive & pump motors for operating in temperatures as low as -20°C
P. 7



► **MAXIMUM EFFICIENCY**
Boost productivity with the 7-Series truck, featuring a small turning radius for enhanced maneuverability, a hydraulic lever with a convenient directional switch, and an auto-tilt leveling system.
P. 6-7



► **COMFORT IN ACTION**
Face long shifts head-on with the added comforts of temperature control, entertainment options, and premium seating.
P. 8-9



► **SAFETY COMES STANDARD**
Work with confidence thanks to the extensive lineup of safety features, including Turtle Mode, emergency stopping, mast and tilt interlocks, and more.
P. 10-11



► **RUGGED RELIABILITY**
Experience a synergy of power, performance, and functionality with features like IP43/IP54-rated dust and water protection, an AC Curtis controller, and oil-cooled disk brakes.
P. 12-13

OUTSTANDING PRODUCTIVITY



RELIABLE AC CONTROLLER

Make every load and lift more efficient with our reliable and powerful AC Curtis controller and single-drive motor.



EXCELLENT VISIBILITY

Confidently work faster and more efficiently on any job site thanks to unparalleled visibility. The overhead guard with angled roof bars offers a clear upward view without compromising strength or safety, while neatly arranged hydraulic hoses reduce clutter.



RESPONSIVE ACCELERATION AND BRAKING

Enjoy the convenience and comfort of controlled, responsive acceleration and braking. When the truck starts, the acceleration is moderated for a secure start. As speed increases so does acceleration, enhancing productivity.



SWIFT DIRECTIONAL CHANGES

Toggle between forward and reverse travel with ease, thanks to a switch conveniently located on the lift lever.

COMFORT & CONTROLS



▶ SPACIOUS CAB

Enjoy increased cab space thanks to the compact steering wheel. This not only eases maneuverability in tight spaces and enhances response time but also allows for more precise load handling. Plus, it reduces operator fatigue and boosts training efficiency for new operators.

▶ MORE LEG ROOM

Our cab provides ample leg room to minimize strain, enhance focus, and create a more relaxed work atmosphere for the operator.



▶ EFFORTLESS CONTROL

Operators can seamlessly control truck performance during operation with the user-friendly instrument panel, which offers a wide range of adjustments and settings. The panel also provides other alerts, ergonomic options, and language preferences for a more comfortable and user-friendly experience.

▶ ADDED CONVENIENCE

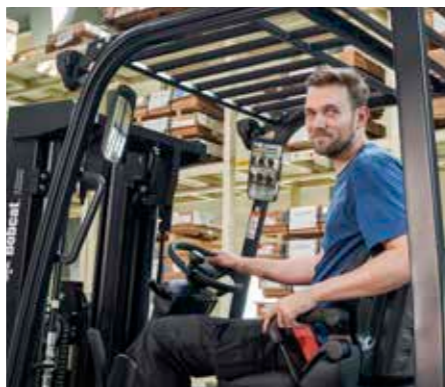
For maximum convenience, enjoy a large cup holder, USB port, 12 V power outlet, and clipboard holder, comfortably placed within your reach.

▶ EASY ACCESS



The anti-slip step provides a comfortable and safe way to hop on and off for peace of mind.

▶ YEAR-ROUND COMFORT



Experience optimal comfort in any weather with the optional heater and air conditioner.

▶ ENHANCE YOUR WORK SPACE



Enhance your work experience with the optional radio and MP3 player – improving focus and relaxation on the job.



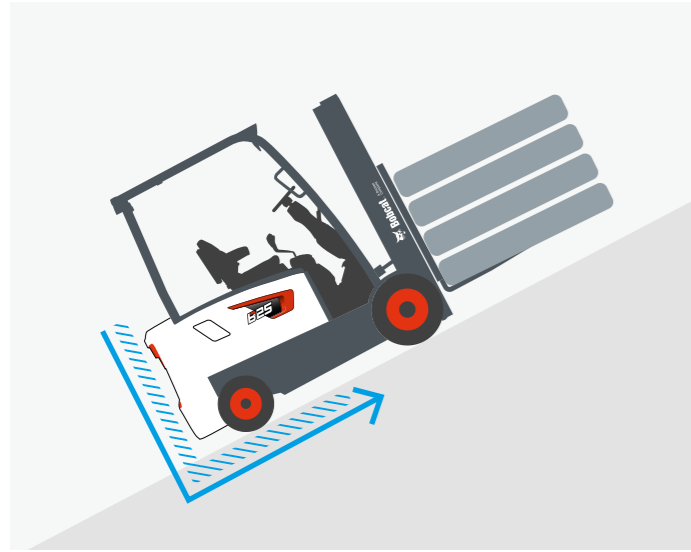
SAFETY IN EVERY MOVE

▶ SAFETY COMES STANDARD

Operators can work with confidence thanks to the extensive lineup of safety features, which include: Turtle Mode, emergency stopping, mast and tilt interlocks, and speed control.

▶ ANTI-ROLL-BACK

The anti-roll-back feature prevents the forklift from rolling back for 5 seconds when the truck is stopped.



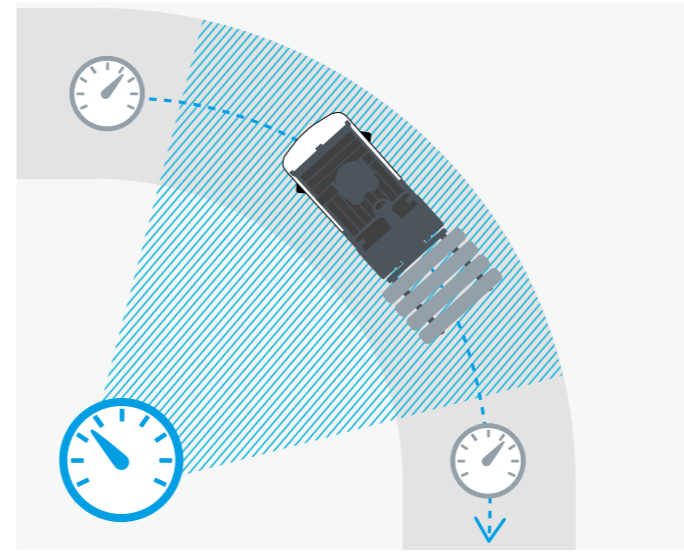
▶ OPERATOR SENSING SYSTEM

To prevent any unwanted movement, the OSS (Operator Sensing System) keeps the operator safe and sound by disabling both truck travel and mast lifting functions as soon as the operator leaves the seat.



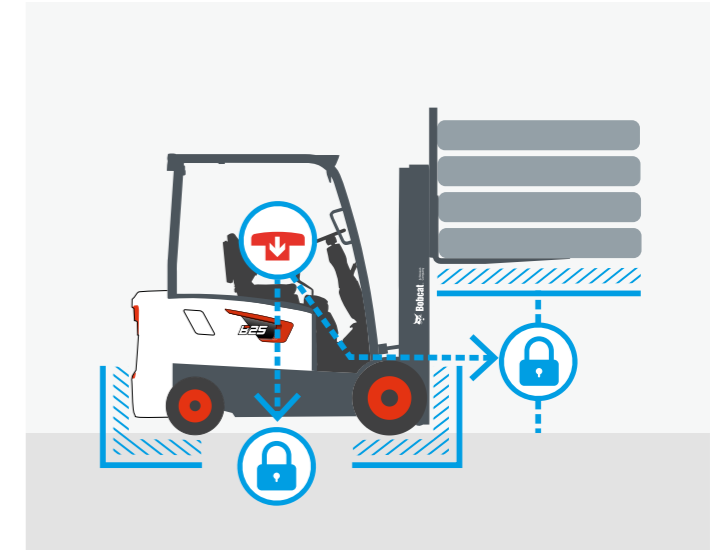
▶ AUTOMATIC SPEED CONTROL

The automatic speed control manages travel speeds when turning sharply and automatically slows the truck down when cornering to reduce the risk of accidents or damage.



▶ EMERGENCY SWITCH

The emergency switch is always within your reach, ready to be pressed in case of emergency.



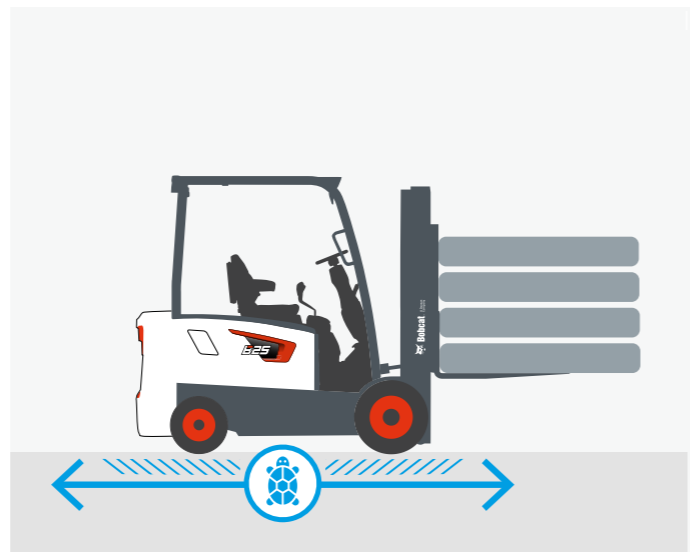
▶ MAST AND TILT INTER-LOCKS

When the operator leaves the truck unattended, the hydraulic locking system prevents unintentional lowering and tilting of the mast. This keeps the truck, load, and work area safe.



▶ TURTLE MODE

To make warehouse operations more secure, activate Turtle mode to decrease the truck's travel speed to a preset level while maintaining lift speed.



▶ PANORAMIC MIRROR

The large panoramic mirror gives the operator a clear and unobstructed view of the rear working area.



▶ LED LIGHTING SYSTEM

The LED lights illuminate even the darkest corners of your workspace, so that you always see your surroundings in safety.



BUILT TO LAST

DESIGNED TO ENDURE

The B25S-7 series is engineered to minimize damage, decrease downtime, boost safety, and enhance operator comfort. We provide Cold Storage Hydraulic Oil that is effective in environments as cold as -20°C, ensuring optimal operational efficiency for your intralogistics business.



THERE'S NO TIME FOR DOWNTIME. STAND UP TO EVERY TASK THAT COMES YOUR WAY, DAY AFTER DAY.

2 YEAR WARRANTY

WARRANTY

Bobcat develops every machine to the highest standards of quality and durability. That's why our standard warranty provides 24 months or 2 000 operating hours (whichever occurs first) of coverage.



PROTECTION PLUS EXTENDED WARRANTY

Enjoy total peace of mind with the Protection Plus Extended Warranty. Offering the same level of protection as our standard warranty, Protection Plus also addresses various customer needs and expectations by providing options for different durations and annual operating hours.

EXTENSIVE DEALER NETWORK

You can rely on our network of dealers and service partners who are always ready to help you.

BOBCAT GENUINE PARTS

We provide our dealers with high-quality components to ensure our equipment stays reliable and consistently delivers dependable performance, even in the toughest conditions.

SPECIFICATIONS

TECHNICAL DATA ACCORDING TO VDI 2198						
		B18S-7	B25S-7	B30S-7	B32S-7	BC30S-7
CHARACTERISTICS						
Drive		Electric				
Operator type		Seated				
Load capacity/rated load (kg)	Q	1 750	2 500	3 000	3 200	3 000
Load center (mm)	c	500				
Load distance, center of drive axle to fork (mm)	x	394	410	411		406
Wheelbase (mm)	y	1 250	1 400	1 550		1 380
WEIGHT						
Service weight (with min. weight of battery) (kg)		3 346	4 400	4 770	4 930	4 995
Axle loading, loaded, front/rear (kg)		4 401 / 695	5 979 / 921	6 855 / 915	7 135 / 995	7 177 / 817
Axle loading, unloaded, front/rear (kg)		1 399 / 1 947	1 854 / 2 546	2 092 / 2 678	2 054 / 2 876	1 971 / 3 024
TIRES						
Tires: pneumatic (P), solid (E), cushion (C)		P/E				C
Tire size, front		6.5-10		23×10-12		21×8×15
Tire size, rear		5-8		18×7-8		16×6×10.5
Wheels number front/rear (× = driven wheels)		2×/2				
Tread, front (mm)	b11	890		950		907
Tread, rear (mm)	b12	890		998		902
DIMENSIONS						
Tilt of mast/fork carriage forward/backward (°)	α/β	6 / 10				
Height, mast lowered (mm)	h1	1 515 – 2 815	1 840 – 3 115	1 865 – 3 115		1 840 – 3 090
Free lift (mm)	h2	130 – 2 080	635 – 1 570	152 – 1 440		152 – 2 240
Max. lift height (mm)	h3	1 830 – 6 000	2 950 – 7 945	2 950 – 6 010		2 950 – 8 250
Height, mast extended (mm)	h4	4 050 – 7 050	4 200 – 9 200	4 200 – 7 255		4 210 – 9 515
Height of overhead guard (mm)	h6	2 120	2 220	2 220		2 210
Height of seat (mm)	h7	1 060	1 098	1 098		1 115
Overall length (mm)	l1	2 920	3 226	3 427	3 457	3 290
Length to forkface (mm)	l2	2 020	2 226	2 377	2 407	2 240
Overall width (mm)	b1/b2	1 090	1 200	1 200	1 200	1 110
Fork dimensions (mm)	s/e/l	35 / 100 / 900	45 × 125 × 1 050	45 × 125 × 1 050	45 × 125 × 1 050	45 × 125 × 1 050
Fork carriage ISO 2328, class		IIA		IIIA		
Fork carriage width (mm)	b3	1 000	1 130	1 150	1 150	1 025
Ground clearance, loaded, below mast (mm)	m1	95	110	110		80
Ground clearance, center of wheelbase (mm)	m2	95	125	125		103
Aisle width for pallets 1 000 × 1 200 crossways (mm)	Ast	3 451	3 670	3 801	3 831	3 578
Aisle width for pallets 800 × 1 200 lengthways (mm)	Ast	3 654	3 870	4 001	4 031	3 778
External turning radius (mm)	Wa	1 855	2 060	2 190	2 220	1 972
Internal turning radius (mm)	b13	530	590	590		595
PERFORMANCE DATA						
Travel speed, loaded/unloaded (km/h)		17 / 17				
Lift speed, loaded/unloaded (mm/s)		400 / 600	390 / 600	340 / 600	320 / 600	350 / 630
Lowering speed, loaded/unloaded (mm/s)		500 / 450	500 / 460			
Max. drawbar pull, loaded/unloaded (N)		10 693	15 598 / 11 674	14 224 / 10 791	14 126 / 10 791	14 216
Max. gradeability, loaded/unloaded (%)		22 / –	24 / 28	19 / 23	18 / 22	18
Service brake		Hydraulic				
ELECTRIC ENGINE						
Drive motor S2 60 min (kW)		13		15.5		16
Lift motor rating at S3 15% <i>n</i> (kW)		16		17		18
Battery compartment (mm)		728 × 1 010 × 480	896 × 1 036 × 530	1 046 × 1 036 × 530		1 017 × 876 × 610
Battery voltage, nominal capacity K5 (V/Ah)		48 / 500		48 / 800		48 / 840
Battery weight (kg)		890	1 220	1 440		1 360 / 1 755
ADDITIONAL DATA						
Type of drive control		AC				
Operating pressure for attachments (bar)		176 / 140	193 / 155	207 / 155	235 / 155	211 / 155
Sound level at the driver's ear according to EN 12 053 (dB(A))		68		70		69

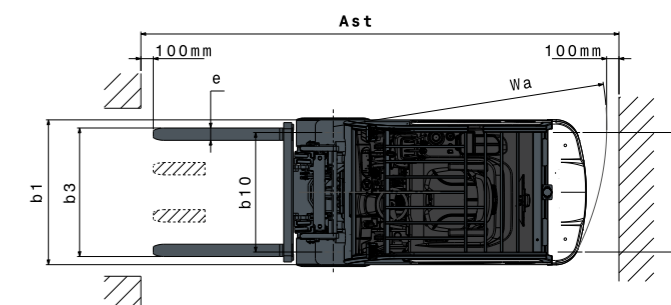
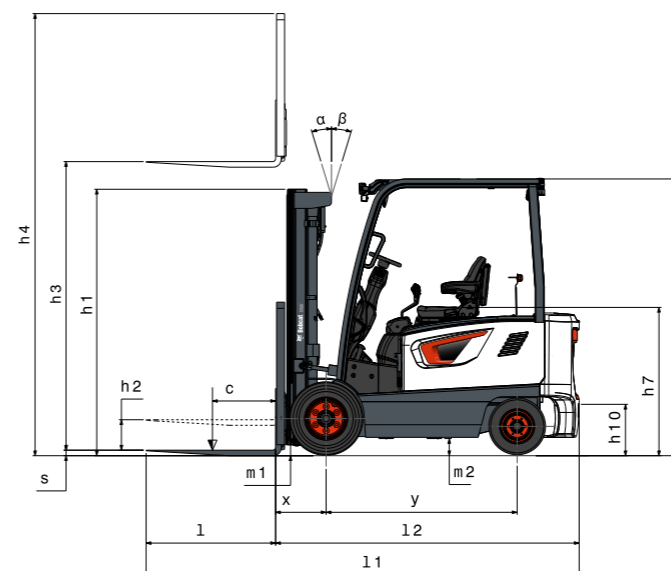
STANDARD EQUIPMENT & OPTIONS

STANDARD EQUIPMENT & OPTIONS	
SAFETY & STABILITY	
Easy entry grab bar	✓
Parking brake (B25S-7 Series only)	✓
Electric Auto Parking Brake (BC30S-7 Series only)	✓
2 front LED lights	✓
Emergency stop switch	✓
Panoramic mirror	•
ERGONOMICS	
Large entry step with anti-slip pattern	✓
Large & angled floor plate (leg room) with rubber cushion	✓
Rounded design battery hood cover	✓
Easy to read instrument panel	✓
Adjustable tilt steering column & easy grip (Ø 280 size) steering wheel	✓
Large cup holder, usb port & 12V electric jack, clip board	✓
Additional accessory bar	✓
Reduced noise level	✓
Rear grab bar with horn	•
Premium suspension seat	•
Full cab	•

STANDARD EQUIPMENT & OPTIONS	
GUARDIAN STABILITY SYSTEM (GSS)	
OSS (Operator Sensing System)	✓
Anti-roll back	✓
Low battery warning alarm	✓
Turtle mode	✓
Mast lowering interlock & tilt lock (ISO 3691)	✓
Back-up alarm	•
PRODUCTIVITY	
Full AC system chassis	✓
Rounded design counterweight	✓
High visibility mast (B20/25S-7)	✓
Hydraulic cushioned valve in freelif cylinder (FFL & FFT)	✓
Auto tilt levelling	•
Direction switch on lift lever	•
RELIABILITY	
Robust frame structure & strong structure overhead guard	✓
IP65-rated Curtis controller	✓
IP43-rated drive & pump motors	✓
Improved cooling performance	✓
IP54-rated drive & pump motors	•
Oil-cooled disc brakes (ODB)	✓
SERVICEABILITY	
Easy to access controller & motors room	✓
Wide open battery hood cover	✓
Tool-less side cover with air ventilation	✓
Easy View	✓

*This list is based on factory data. Standard or optional can vary for specific countries.

• = option
 ✓ = standard
 – = not available



Note: This dimensional drawing only applies to the 4 wheels series.

FINANCING OPTIONS

24, 36, OR 48 MONTH FINANCING*

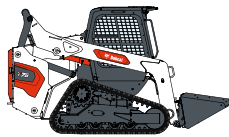
Take advantage of 24, 36 or 48 month financing programs starting from **0% interest** and improve your cashflow.

Ask your dealer for the financing offers available.

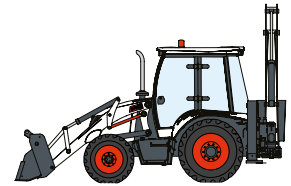
340 MACHINES / 150 ATTACHMENT FAMILIES / 1 TOUGH ANIMAL



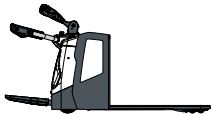
**SKID-STEER
LOADERS**



**COMPACT TRACK
LOADERS**



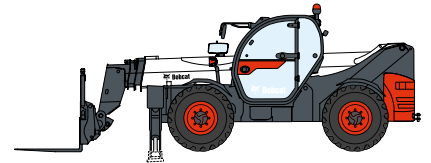
**BACKHOE
LOADERS**



**WAREHOUSE
EQUIPMENT**



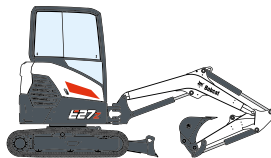
FORKLIFTS



TELEHANDLERS



**LIGHT COMPACTION
EQUIPMENT**



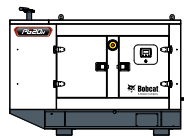
**COMPACT
EXCAVATORS**



**SMALL ARTICULATED
LOADERS**



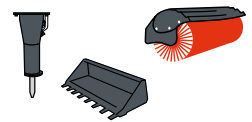
**MINI TRACK
LOADER**



**PORTABLE
GENERATORS**



AIR COMPRESSORS



ATTACHMENTS

DOOSAN

Bobcat is a Doosan Company. Doosan is a global leader in construction equipment, power & water solutions, engines, and engineering proudly serving customers and communities for more than a century. | Bobcat and the Bobcat logo are registered trademarks of Bobcat Company in the United States and various other countries. ©2023 Bobcat Company. All Rights Reserved.

www.bobcat.com

©2023 BOBCAT B4502580-EN (11-23)



Bobcat®

*Financing options may vary by country and dealer. Always ask your dealer about currently available financing options. Terms and conditions may apply.

Doosan Bobcat EMEA, U Kodelky 1810, 263 12 Dobříš, Czech Republic