



## CHARACTERISTICS

- DUAL PUMP MODULES AS STANDARD FOR MAXIMUM UPTIME AND REDUNDANCY.
- PROTECTIVE CASING
- HIGH PRESSURE AND FLOW RATE FOR VERY LARGE SYSTEMS IN ATEX ENVIRONMENTS
- 380 CM<sup>3</sup>/MIN (2X 190 CM<sup>3</sup>/MIN PER MODULE)
- 400 BAR (5800 PSI)
- ELECTRICAL DUAL LINE INVERTER INTEGRATES DIRECTLY ONTO OUTLET.
- MINIMUM LEVEL CAPACITANCE SWITCH AND VISUAL MAXIMUM LEVEL AS STANDARD.
- HANDLES-GREASE NLGI 2.
- SUPPLIED ON A FIXING PALLET AS STANDARD FOR EASE OF TRANSPORTATION-AND INSTALLATION.

## APPLICATIONS

- EXPLOSION-RISK ENVIRONMENTS
- HEAVY DUTY APPLICATIONS IN DEMANDING ENVIRONMENTS
- STEEL INDUSTRY
- PULP & PAPER
- CEMENT WORKS
- STEEL PLANT
- OFF-SHORE
- LARGE CRANES AND LOADING EQUIPMENT

## SUMO II ATEX ELECTRIC PUMP

THE FLEXIBLE HIGH PERFORMANCE SOLUTION FOR EXPLOSION-RISK ENVIRONMENTS

### DUAL PUMPING MODULE

The **SUMO II ATEX pump** is the DropsA electric pump with a protective casing that makes it ideal for use in **Zone 1 and 21, Zone 2 and 22 (ATEX) explosion-risk environments.**

The two pumps installed using the dual configuration guarantees a maximum pressure of 400 bar in redundancy mode. Configured in this way, it also works even if one of the two pumps should stop.

### INSTRUMENTATION AND MODULES

SUMO II can be equipped with sophisticated additional modules to adapt the pump to complex applications using DropsA standard products.

### QUICK SWAP SYSTEM

Both **PUMPING MODULES** can be quickly replaced. In fact, it not necessary to take any action on the pipework and connections, reducing downtime during maintenance to practically zero.

### DUAL LINE OR SINGLE LINE IS EASY

The outlet plate fixing system has both Pressure and Return ports. The outlets are directly compatible with Dropsa's electrical or pneumatic line inverters (including Modular version).



## DUAL LINE SYSTEM

### SIMPLE AND RELIABLE ESPECIALLY IN EXPLOSION-RISK ENVIRONMENTS

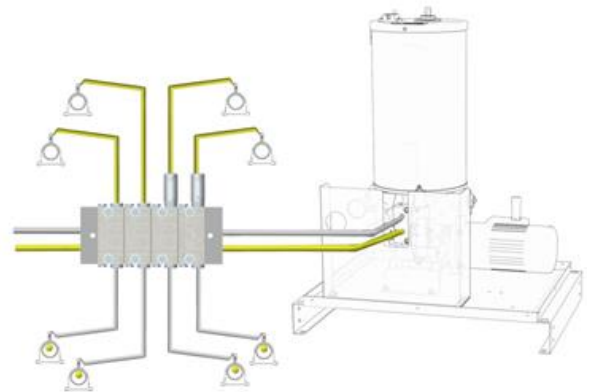
The lubrication systems designed with the dual-line system are generally used for lubricating several points on over-size machinery and in uncomfortable functioning conditions.

The system can grow to a very complex one with a length that often can exceed 60 meters. The large section of pump packages together with many custom design options allows any lubrication system to be developed reliably and cost-effectively.

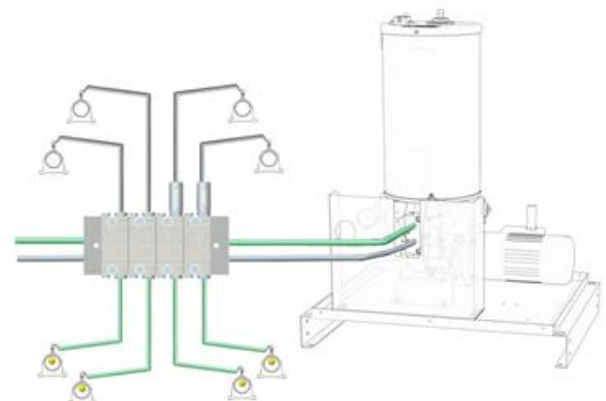
### ADVANTAGES:

1. Can be used at high pressures.
2. Easily to expand or modify the system
3. The modular elements allow for the element to be changed quickly without disconnecting the pipework.
4. In the event that a point to be lubricated becomes blocked or is not adequately lubricated, the rest of the system is not influenced and continues to operate normally.

### PRESSURISATION LINE 1



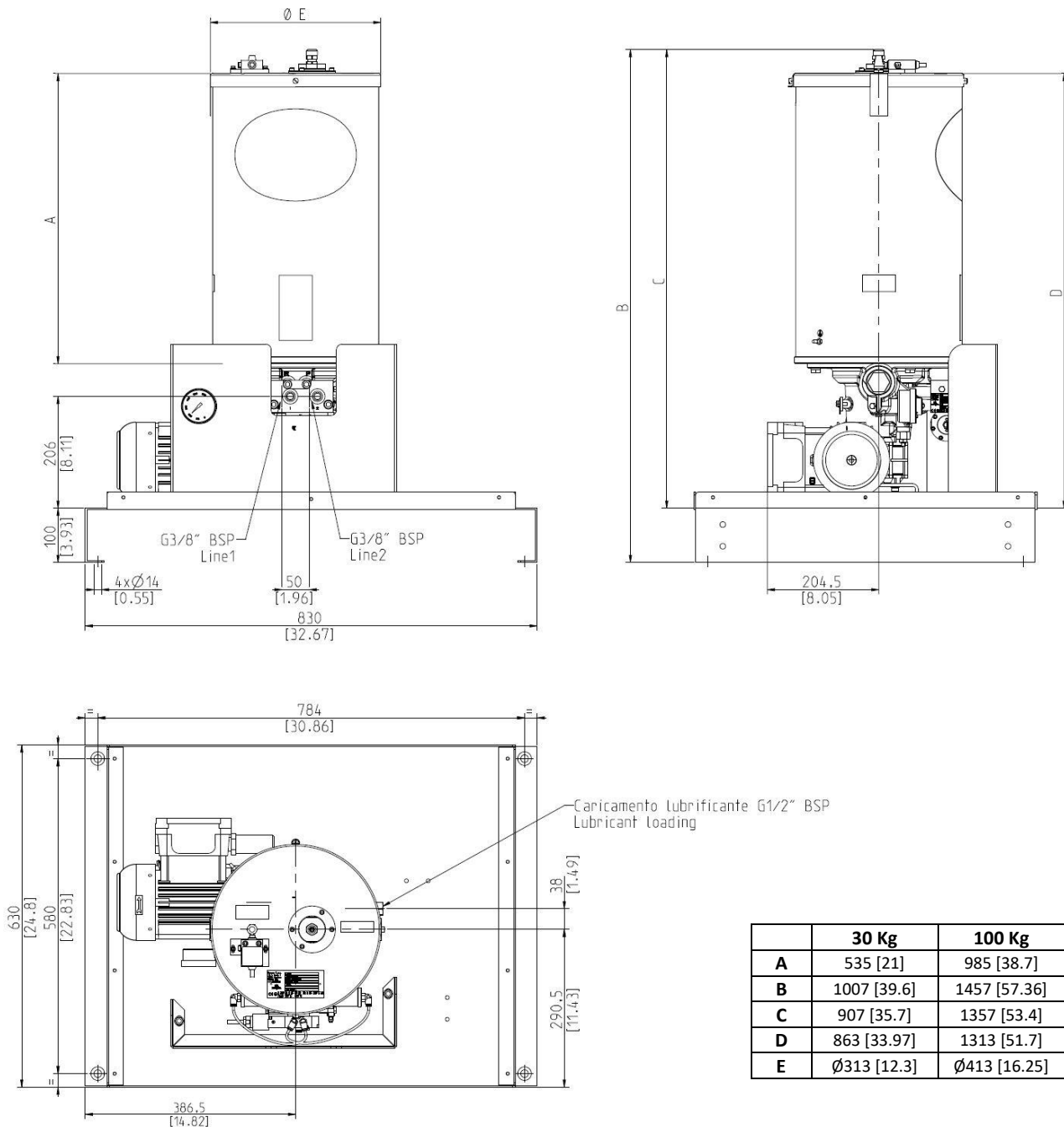
### PRESSURISATION LINE 2



## TECHNICAL INFORMATION

TECHNICAL CHARACTERISTICS	
Max pressure	400 bar (5800 psi)
Output Flow Delivery	380 cm <sup>3</sup> /min total (standard) 190 cm <sup>3</sup> single pumping
Operating Temperature	- 20 ÷ + 40 °C (-4 ÷ 104 °F)
Operating Humidity	90% rel. humidity
Degree of motor protection	IP 65
Viscosity at operating temperature	Lubricating Oil Min. 32 cSt max. 1000 cSt; Grease Max. NLGI2

## DIMENSIONS



	30 Kg	100 Kg
A	535 [21]	985 [38.7]
B	1007 [39.6]	1457 [57.36]
C	907 [35.7]	1357 [53.4]
D	863 [33.97]	1313 [51.7]
E	Ø313 [12.3]	Ø413 [16.25]



ORDERING INFORMATION

N.B. The part number of the pump is composed by 11 numbers.

				Standard							
SUMO II ATEX PUMP				Database	4°	5°/6°	7°	-	8°/9°	10°	11°
				253	0	00	0		0	0	0
	Description	DROPSA code	CODE								
Tank	-	-	0								
	30 kg	0297060	1								
	100 kg	0295090	2								
Three-phase electric motor	Motor not present	-	00								
	STANDARD 230/400V 50Hz	3301531	01								
	Pneumatic motor	3301539- 0520558-3130499	02								
	Does not have inverter	-	0								
4/2 electro-pneumatic inverter	24 V DC	0083570	1								
	24 V AC	0083571	2								
	110 V AC	0083572	3								
	230 V AC	0083573	4								
Hydraulic inverter		0086450	5								
Maximum minimum level	Grease capacitive Exi (minimum) + Microswitch Exd (max)	0297061 (30kg)	01								
		0297110 (100kg)	02								
	Exd oil level float	0295153 (30kg)	03								
		0295156 (100kg)	04								
	Oil / grease Laser 2 configurable digital outputs and 4÷20Ma Exd housing	0295145 (30kg)	05								
		0295135 (100kg)	06								
Pumping elements	Two pumping elements	0296080	0								
	One pumping element	0296080-0298005	1								
Terminal board	Without terminal board	-	0								
	Terminal board complete with wiring	1525722	1								

\* The level floats for oil signal the minimum and maximum level.

Contact our technical sales office for special supplies, for example version with separate outlets.

Spare part description		Code
Motors	3Ph - 0,75 Kw - 230Δ/400Y 50Hz	3301531
	Pneumatic	3301539
Reducer i=40		3301769
30 kg capacitive level		0297063
100 kg capacitive level		0297115
Microswitch		3164135
Filling filter		0297007
Paddle filter		0297167
Tank o-ring		3190485
By-pass		0234815
Pressure gauge 0 - 600 Bar		3292154
Pumping element		0296080C
Metal pallet		0297165

Distributor Info:

C2324PE WK 40/21

Dropsa products can be purchased from Dropsa subsidiary and Dropsa sales representatives, visit [www.dropsa.com/contact](http://www.dropsa.com/contact) or contact us [sales@dropsa.com](mailto:sales@dropsa.com)